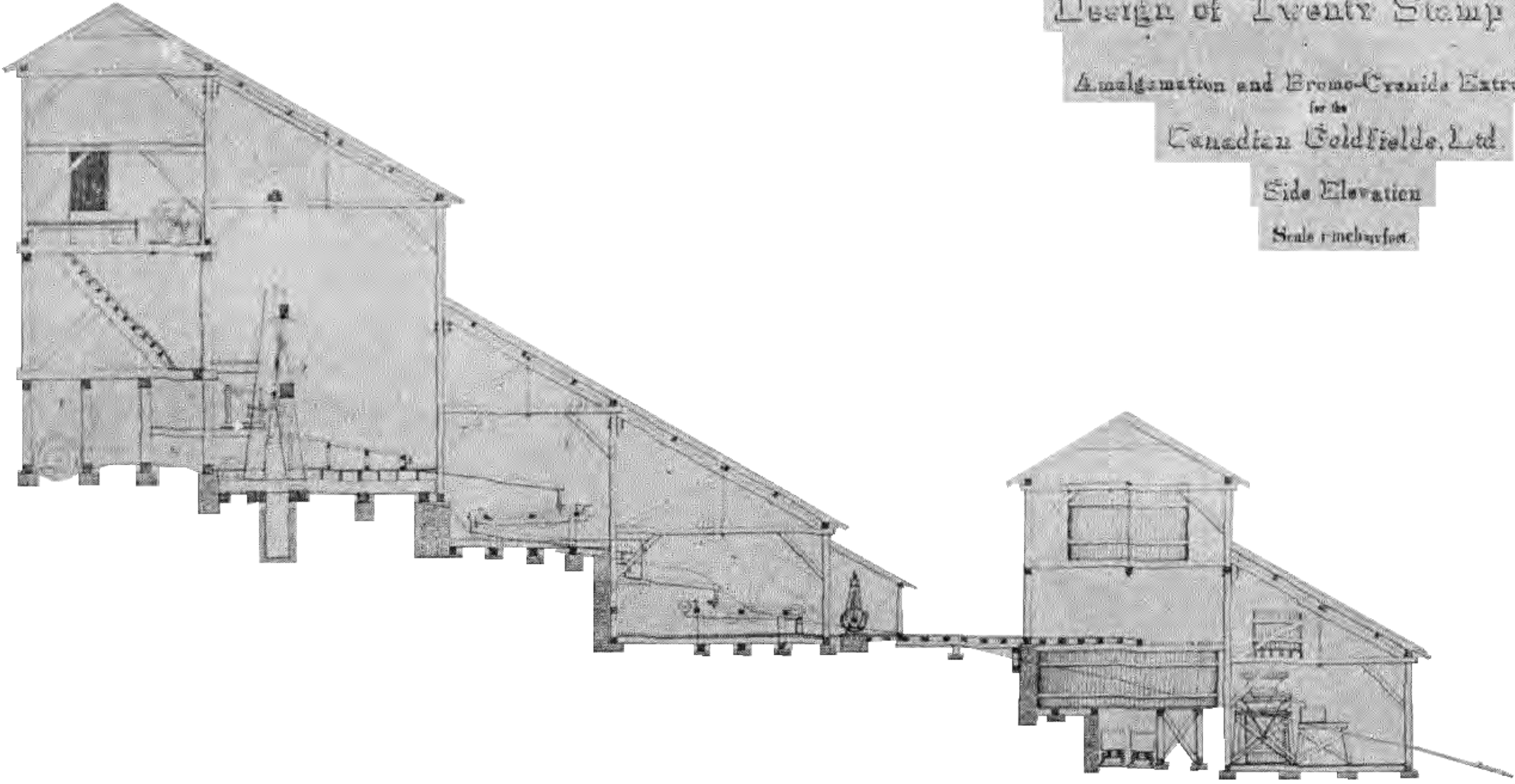


Design of Twenty Stamp Mill  
 Amalgamation and Bromo-Cyanide Extraction  
 for the  
 Canadian Goldfields, Ltd.  
 Side Elevation  
 Scale 1-inch=4-feet




Drawing file: 1111260037-4000-R06001.dwg Apr 20, 2012 - 10:02am

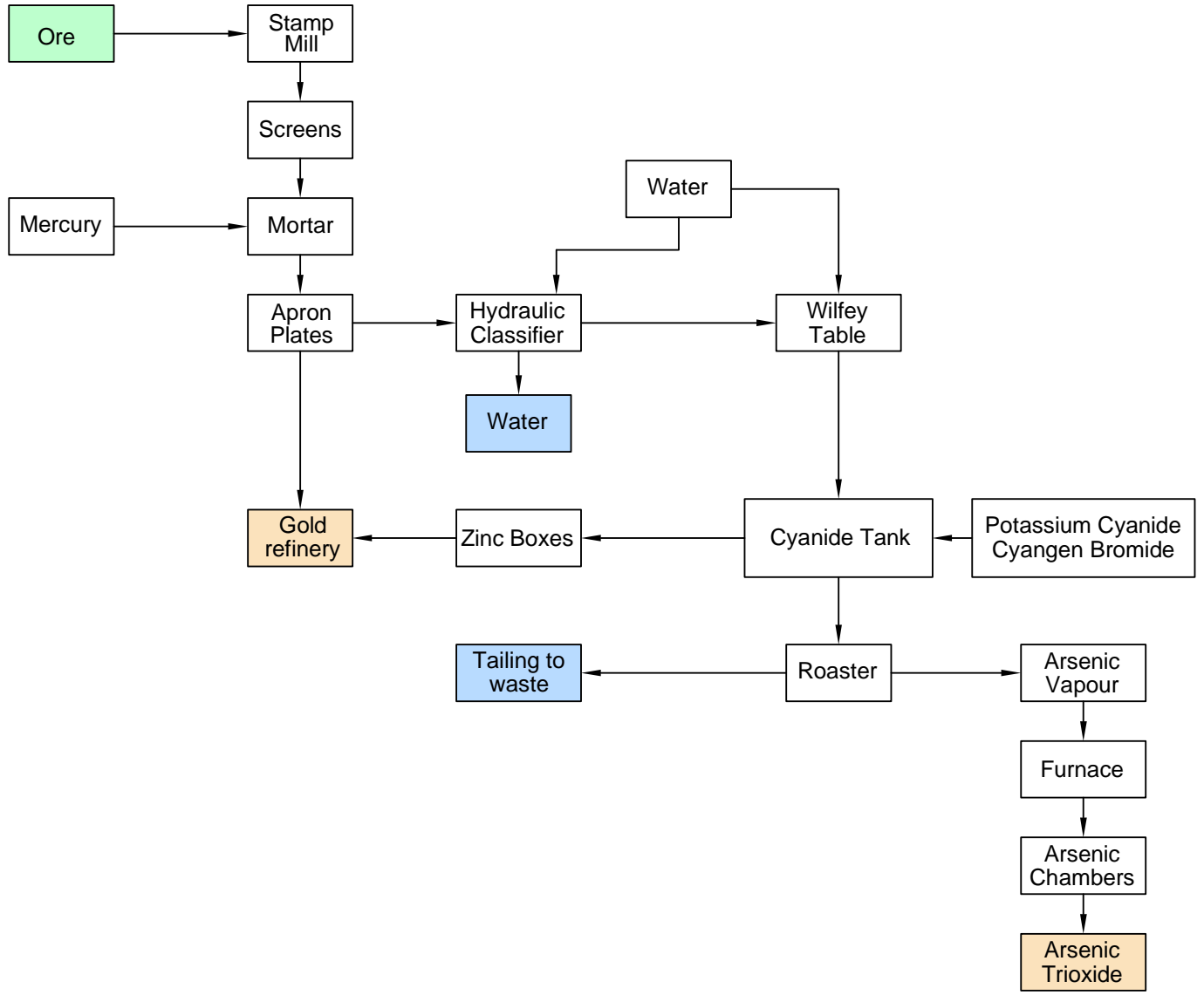
**REFERENCE**

DRAWING BASED ON "THE DELORO MINING AND REDUCTION COMPANY," IN CANADIAN MINING JOURNAL, VOL. 1, #17. 1907.

**NOTES**

THIS DRAWING IS SCHEMATIC ONLY AND IS TO BE READ IN CONJUNCTION WITH ACCOMPANYING TEXT.  
 ALL LOCATIONS ARE APPROXIMATE.

PROJECT				CULTURAL HERITAGE EVALUATION REPORT DELORO MINE SITE TOWNSHIP OF MARMORA AND LAKE HASTING COUNTY, ONTARIO			
TITLE				CROSS SECTION OF THE TWENTY STAMP MILL			
PROJECT No.		11-1126-0037		FILE No.		1111260037-4000-R06001	
SCALE		NTS		REV.			
CADD	DCH	Apr. 20/12					
CHECK							
 <b>Golder Associates</b> LONDON, ONTARIO				<b>FIGURE 9</b>			



**LEGEND**

- RAW MATERIALS
- PRINCIPAL WASTES
- PRODUCTS

**REFERENCE**

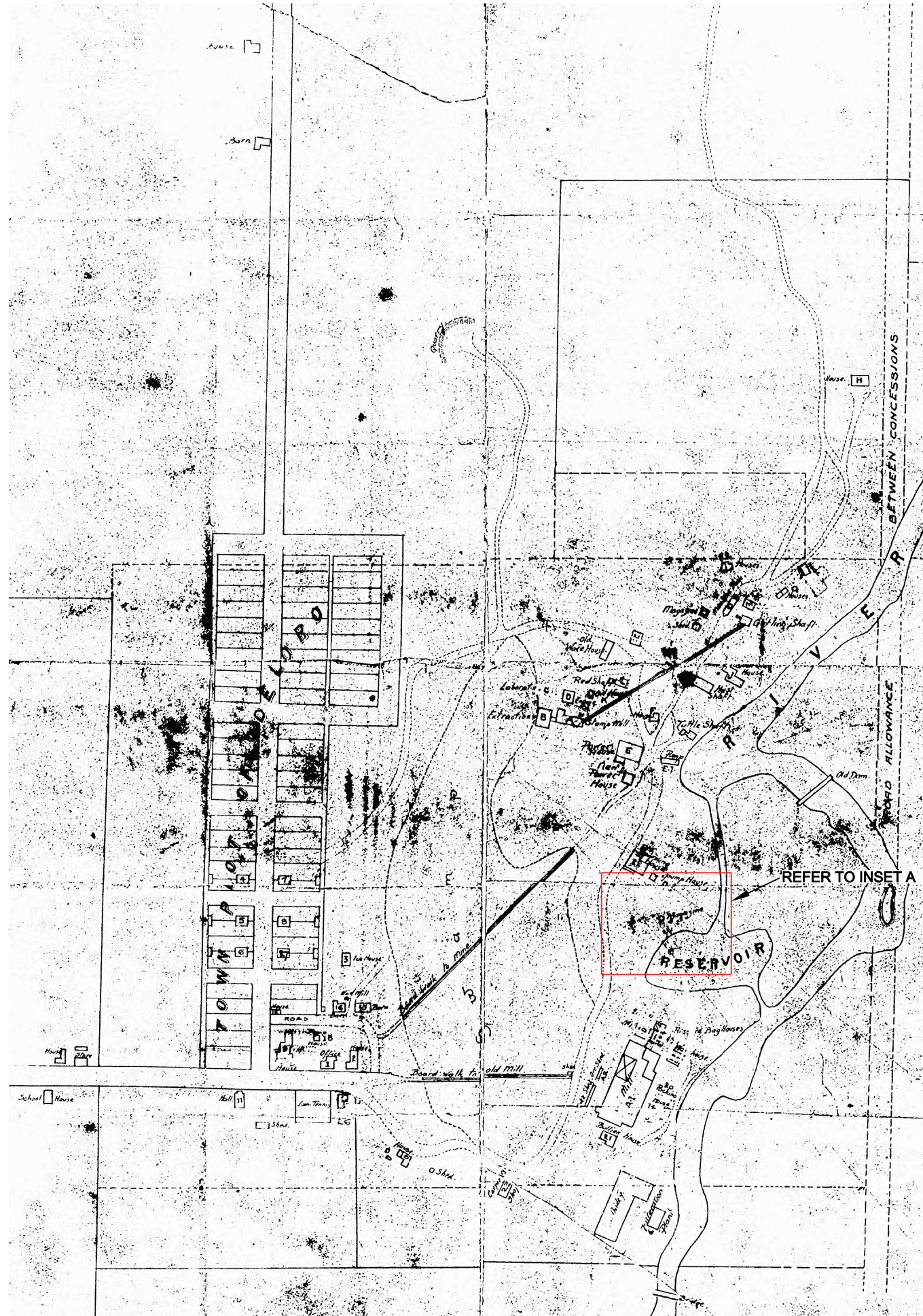
REID, CROWTHER AND PARTNERS LTD REPORT, 1980 IN COMMONWEALTH HISTORIC RESOURCES MANAGEMENT LIMITED, *AN HISTORICAL ANALYSIS OF THE DELORO SITE*, 1988

**NOTES**

THIS DRAWING IS SCHEMATIC ONLY AND IS TO BE READ IN CONJUNCTION WITH ACCOMPANYING TEXT.

PROJECT		CULTURAL HERITAGE EVALUATION REPORT DELORO MINE SITE TOWNSHIP OF MARMORA AND LAKE HASTING COUNTY, ONTARIO			
TITLE		<b>REFINING PROCESS, CANADIAN GOLDFIELDS, 1896-1903</b>			
<b>Golder Associates</b> LONDON, ONTARIO		PROJECT No. 11-1126-0037		FILE No. 1111260037-4000-R06001	
		CADD	DCH	Apr. 20/12	SCALE
		CHECK			FIGURE 10





INSET A



DETAIL OF LETTERING FOR "MAGAZINE"

**REFERENCE**

DRAWING BASED ON "AUTHOR UNKNOWN", PROVIDED BY THE MINISTRY OF THE ENVIRONMENT, DELORO PROJECT COLLECTION, KINGSTON, ONTARIO.

**NOTES**

THIS DRAWING IS SCHEMATIC ONLY AND IS TO BE READ IN CONJUNCTION WITH ACCOMPANYING TEXT. ALL LOCATIONS ARE APPROXIMATE.

PROJECT				CULTURAL HERITAGE EVALUATION REPORT DELORO MINE SITE TOWNSHIP OF MARMORA AND LAKE HASTING COUNTY, ONTARIO			
TITLE				TOWN PLOT OF THE VILLAGE OF DELORO AND DELORO MINE SITE PROPERTY, 1919			
PROJECT No.		11-1126-0037		FILE No.		1111260037-4000-R06001	
SCALE		NTS		REV.			
CADD	DCH	Apr. 20/12		FIGURE 11			
CHECK							

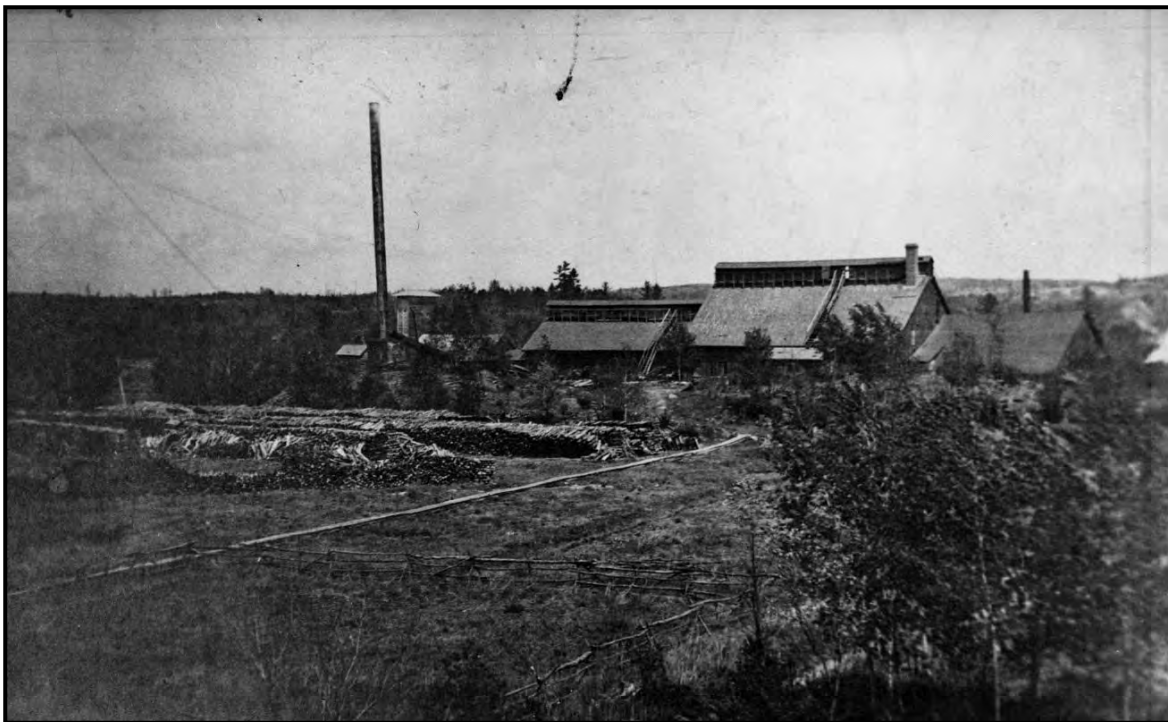




**CULTURAL HERITAGE EVALUATION REPORT  
DELORO MINE SITE, COUNTY OF HASTINGS**



*Plate 25: Air compressor and former generator in brick powerhouse in centre, transformer building on left, insecticide building on right, c. 1920*



*Plate 26: General view of the arsenic works, c. 1900. Originally built c. 1880 by Canada Consolidated Goldmine. See also Plate 10. Community Archives of Belleville and Hastings County, HC Deloro 3 (image has been resized).*



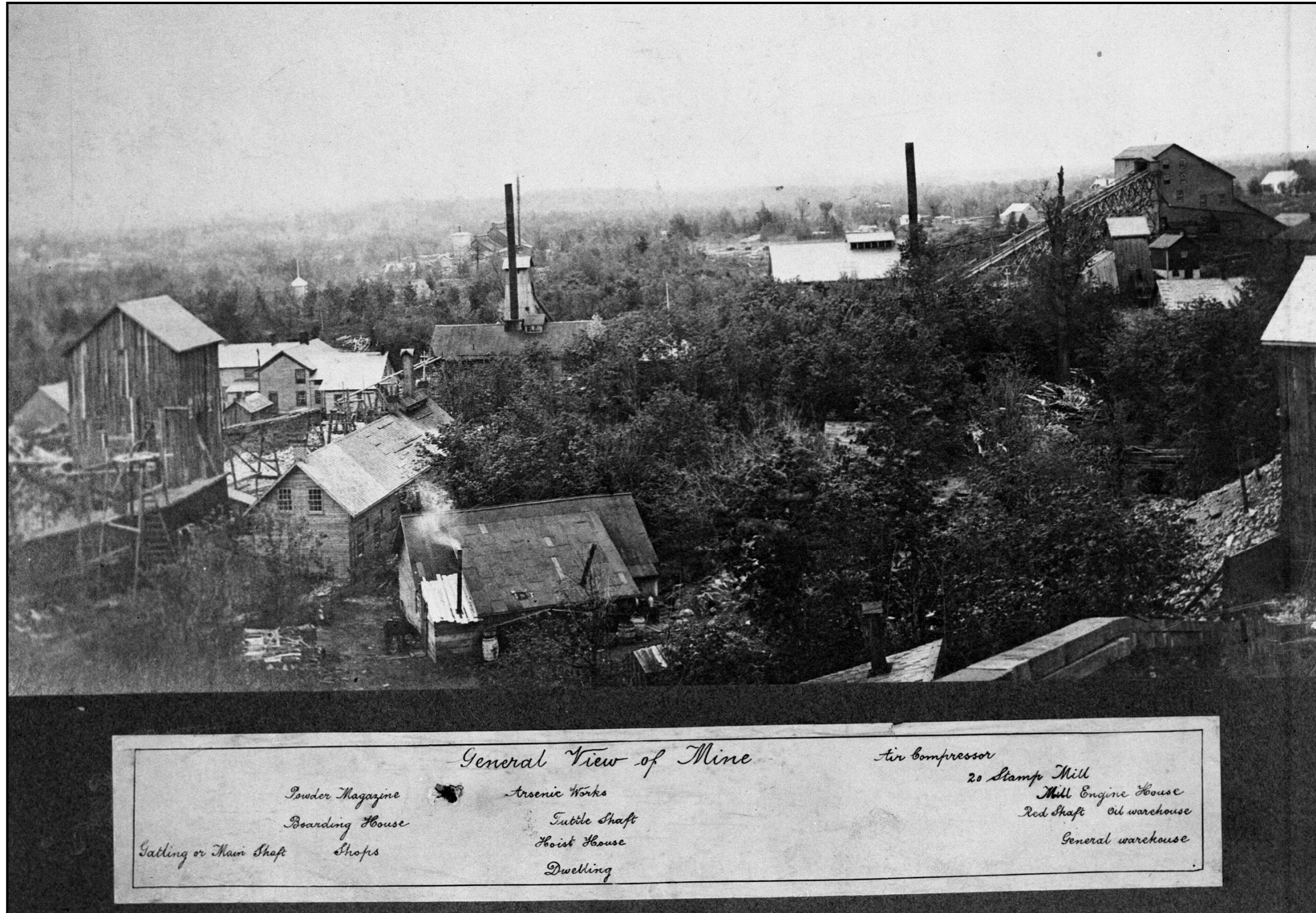


Plate 27: Gatling Mine on left, Tuttle Mine centre with Arsenic Works in background, Air Compressor Building with tall chimney centre left, Red Shaft Mine in front of Twenty-Stamp Mill on right, looking southeast c.1900. Community Archives of Belleville and Hastings County, HC Deloro 1 (image has been resized).



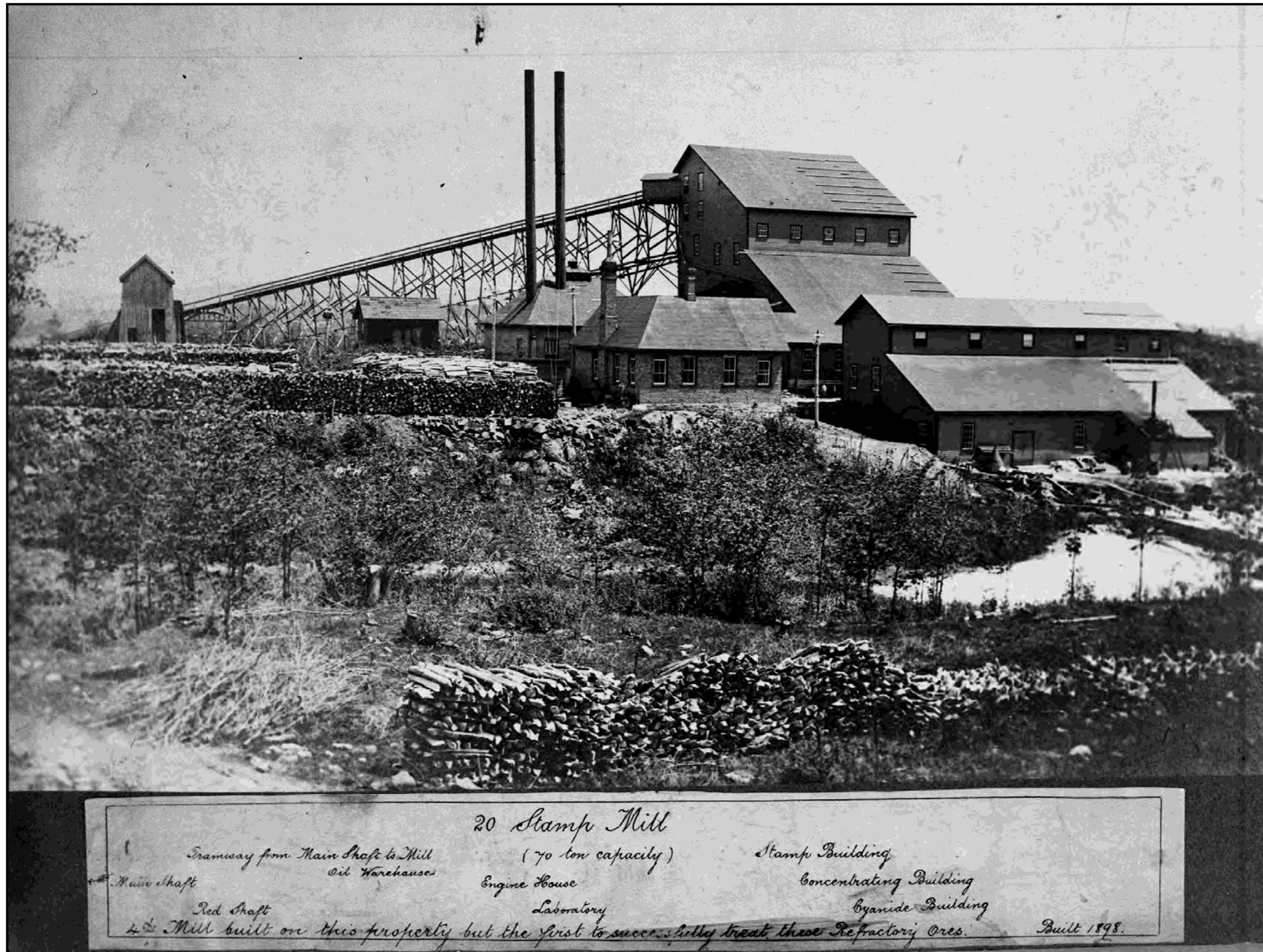


Plate 28: Red Shaft Mine on right, Twenty-Stamp Mill centre, ca. 1900. Community Archives of Belleville and Hastings County, HC Deloro 7 (image has been resized).





*Plate 29: Atlas Arsenic with office to the left with stamp mill and powerhouse to the right. Snell.*



*Plate 30: Showing burn marks at the Twenty-Stamp Mill*



*Plate 31: Middle level of Twenty-Stamp Mill*





*Plate 32: Trestle to support line shaft from powerhouse (location of range rod) to Twenty-Stamp Mill.*



*Plate 33: Wood tank adjacent to site of concentrator building.*





*Plate 34: Laboratory dump with furnace at centre.*



*Plate 35: Atlas Arsenic Stamp Mill ruins.*





*Plate 36: Stamp Mill Road showing stone retaining wall.*



*Plate 37: Centre Line of Twenty-Stamp Mill Road; retaining wall on right side.*





Plate 38: Powder Magazine with vent at base of shaft. See also Plate 27 for c.1900 view and Figure 11 for location



Plate 39: Ruin at the Pearce Mine in May 2011 prior to remediation.